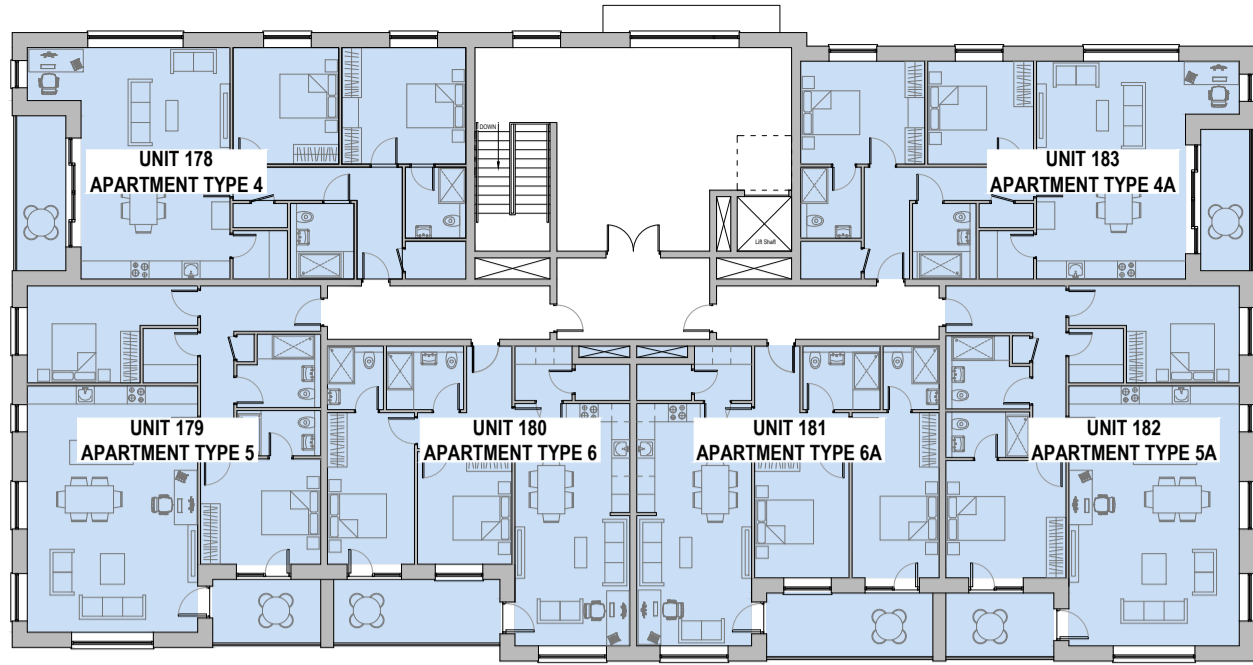
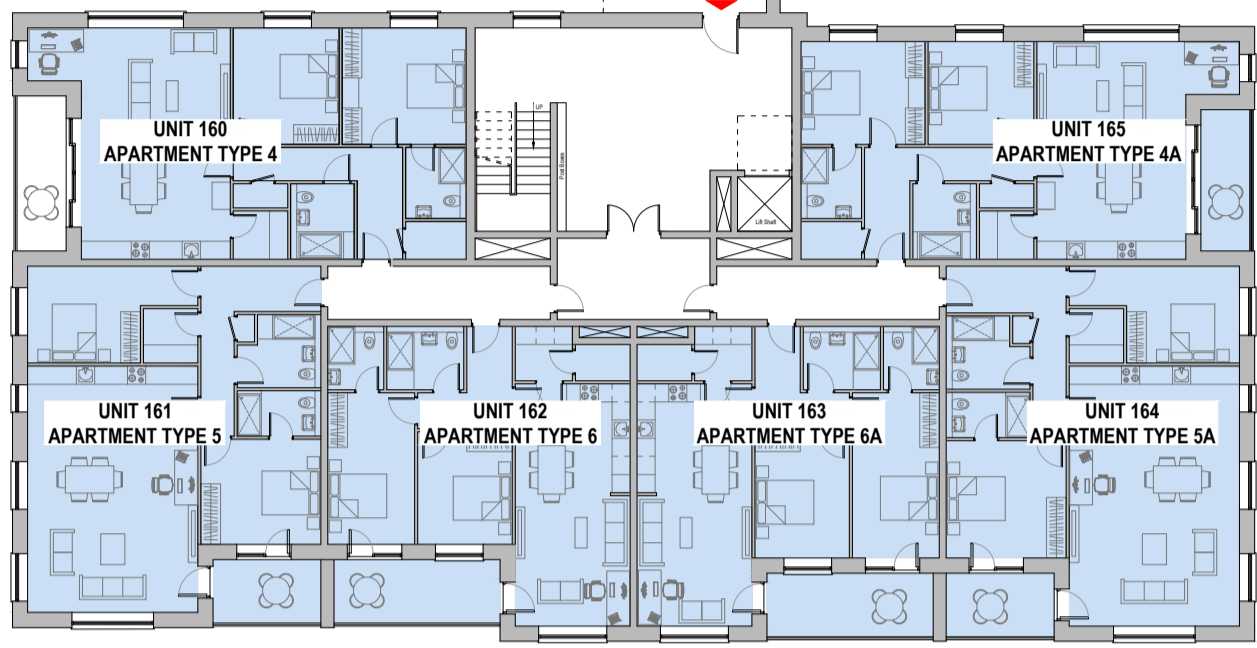


FIRST FLOOR PLAN
Scale 1:250



THIRD FLOOR PLAN
Scale 1:250



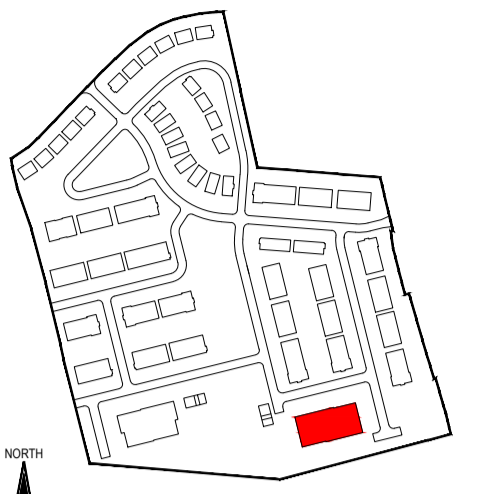
GROUND FLOOR PLAN
Scale 1:250



SECOND FLOOR PLAN
Scale 1:250

COPYRIGHT
THIS DOCUMENT AND ALL DATA CONTAINED HEREIN REMAIN THE PROPERTY OF O'DALY ARCHITECTS. IT IS SUPPLIED IN CONFIDENCE FOR EVALUATION PURPOSES ONLY UNDER THE CONDITION THAT SAME IS NOT USED, REPRODUCED OR TRANSMITTED IN ANY WAY TO OTHERS WITHOUT WRITTEN CONSENT.

DIMENSIONS
UNLESS OTHERWISE STATED, DIMENSIONS SHOWN ARE IN MILLIMETRES. NO DIMENSIONS TO BE SCALED FROM THIS DRAWING. ALL DIMENSIONS TO BE CHECKED BY THE CONTRACTOR ON SITE AND ANY DISCREPANCIES TO BE REPORTED TO THE ARCHITECT.

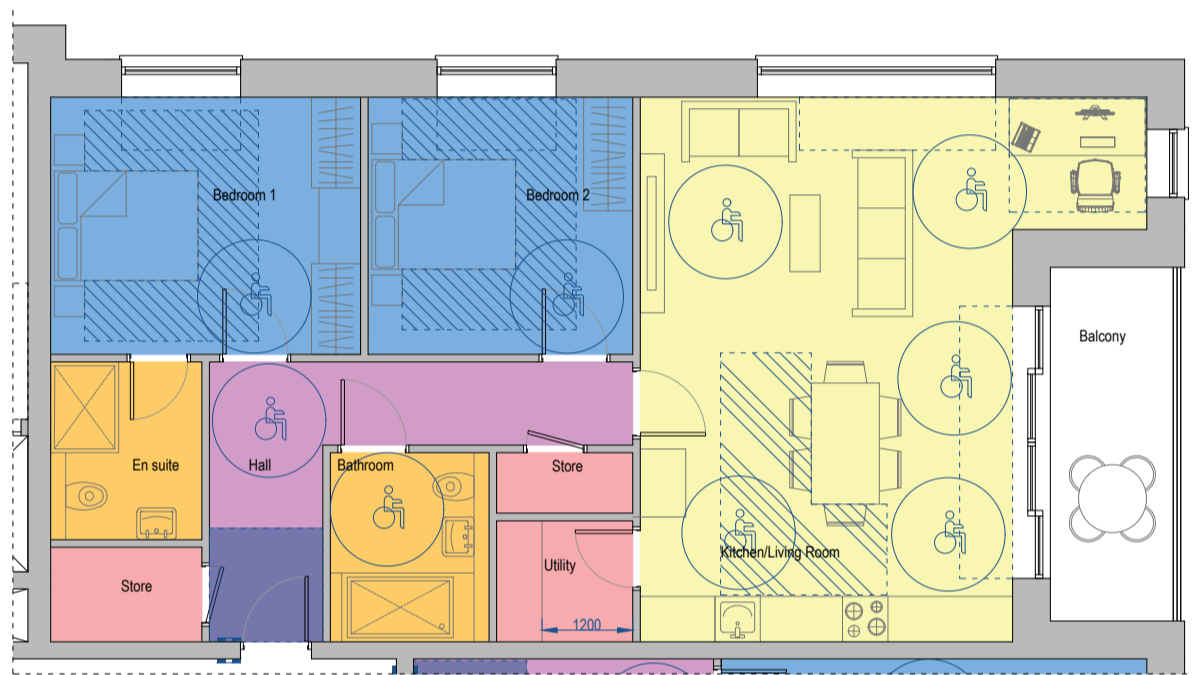


Key Plan
Scale 1:5000

Universally Design Apartments Coloured Blue

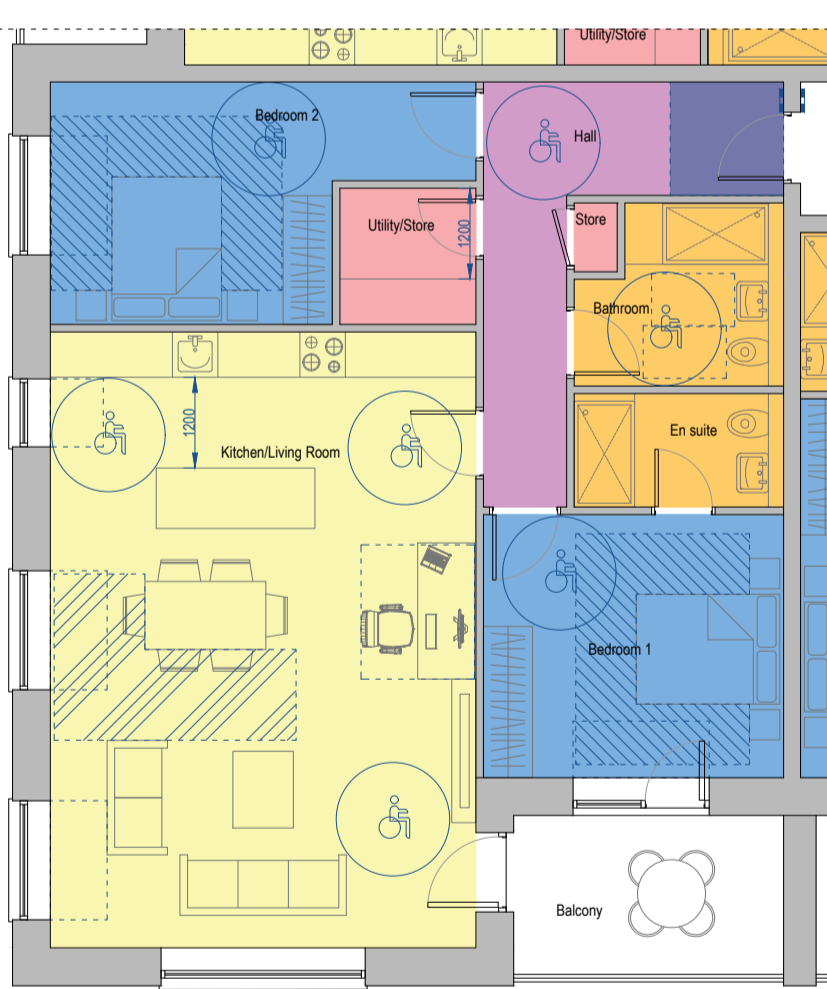


Apartment Type 4 - Units No.'s 160, 166, 172 & 178
2 bedroom 4 Person - Area 100.45m²
Scale 1:100

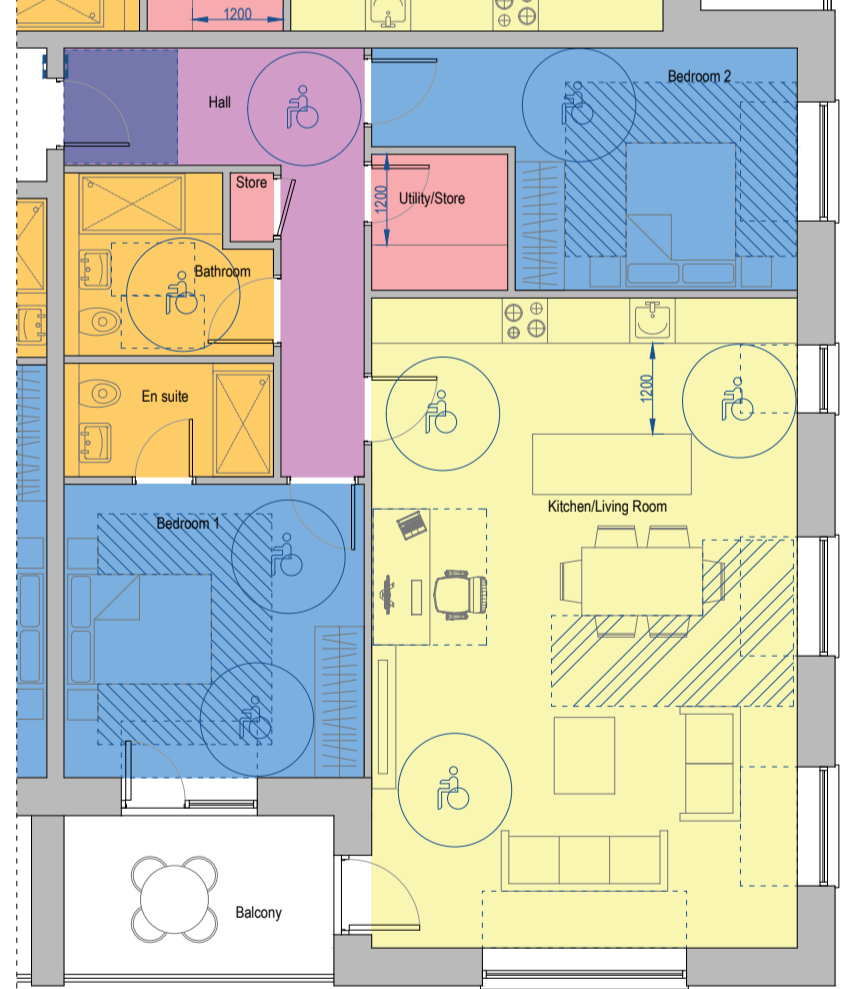


Apartment Type 4A - Units No.'s 165, 171, 177 & 183
2 bedroom 4 Person - Area 94.72m²
Scale 1:100

Legend	
Age Friendly Lifetime Adaptable / Universal Design Home	
1100 x 700mm Clear Activity Space in Bathrooms/WC	
1500 x 1500mm Space Adjacent to Entrance Door	
1500mm Turning Circle	
800mm Clear Space Around Bed	
1200mm Clear Space to Two Continuous Sides of Kitchen Table	
750mm Clear Space to Window	
300mm Clear Space	



Apartment Type 5 - Units No.'s 161, 167, 173 & 179
2 bedroom 4 Person - Area 101.90m²
Scale 1:100



Apartment Type 5A - Units No.'s 164, 170, 176 & 182
2 bedroom 4 Person - Area 106.27m²
Scale 1:100

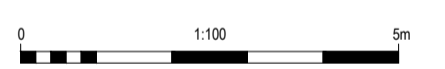


Apartment Type 6 - Units No.'s 162, 168, 174, 180
2 bedroom 4 Person - Area 82.36m²
Scale 1:100



Apartment Type 6A - Units No.'s 163, 169, 175 & 181
2 bedroom 4 Person - Area 106.27m²
Scale 1:100

Lifetime Adaptable Age Friendly / Universal Design Home Internal Layout Checklist			
Location	Guidelines Summary	UD Home	Check
Entrance Hallway	Level access	Yes	Yes
	Entrance door minimum effective clear width	800mm	Yes
	Minimum clear space adjacent to entrance door	1500 x 1500mm	Yes
Corridors	Minimum width between walls	1050mm	Yes
Doors	Minimum effective clear width of doors, straight on approach of right-angled approach via corridor at least 1100mm wide	800mm	Yes
	Minimum effective clear width of doors, right-angled approach via corridor less than 1100mm wide	850mm	N/A
	Minimum clear space beside the leading edge of entrance door	300mm	Yes
Living Spaces	A living space at the same level as the entrance to the home	Yes	Yes
	Living room minimum width	3600mm (2 Bed)	Yes
	Minimum clear turning circle diameter	1500mm	Yes
Dining area	Minimum width of clear route between items & in front of windows and routes between doors	750mm	Yes
	Minimum clear space for use and movement around the dining table	1200mm on 2 consecutive sides of table, continuous	Yes
Kitchen	Locate the dining area within or immediately adjacent to the kitchen	Yes	Yes
	Minimum space between work surfaces where applicable	1200mm	Yes
Bedroom	Minimum clear turning circle diameter	1500mm	Yes
	All doors to the kitchen from habitable rooms are outside the main workspace	Yes	Yes
	Ensure that the cooker/hob and sink are in the same run of worktop	Yes	Yes
	Minimum size of double and twin bedrooms	13m ²	Yes
Bathroom	Minimum clear space both sides and end of the double bed	800mm	Yes
	Minimum clear turning circle diameter in double bedroom	1500mm	Yes
	Minimum internal dimensions	2100 x 2400mm	Yes
	Minimum turning circle diameter with a 200mm overlap of the basic allowed outward opening door, preferably against a wall	1500mm	Yes
Utility / Storage	Basin minimum access space to front	1100 x 700mm	Yes
	Toilet minimum access space to front	1100 x 700mm	Yes
	Toilet centreline from wall	400-500mm	Yes
	Mixture of storage type (e.g. shallow cupboard/deep cupboard/storage room)	Yes	Yes
Study / work space	Cupboard depth range	300-600mm	Yes
	Provide a clear space in front of laundry machines	1200mm	Yes
	Natural light to study / work space	Yes	Yes
Private open space	Study / work space length minimum	Min 1800mm	Yes
	Study / work space depth minimum (incl. chair space)	Min. 1500mm	Yes
	Minimum effective clear width of doors to private open space	800mm	Yes
	Level access to private open space	Yes	Yes if required



THIS DRAWING SHOULD BE READ IN CONJUNCTION WITH THE UNIVERSAL DESIGN STATEMENT DOCUMENT REF. 24004-AR-UDS



1st Floor - Unit 13(B) - Mullaghboy Industrial Estate
Navan - County Meath - Tel: (046) 9021283
Mobile: (087) 0925233 - Email: ivan@odaly.ie



Client:
Loughglynn Developments Ltd.

Project Name and Address:
Proposed Large Residential Development (LRD) at "Crowpark 1st Division", Kildalkey Road, Trim, County Meath.

Project Stage:
Planning

Drawing Name:
Lifetime Adaptable Age Friendly and Universal Design Apartments Block B Floor Plans

Drawn By: iod
Scale: as shown @ A2
Checked By: iod
Date: 04.06.2026

Drawing Number: 24004-AR-316
Revision: P01